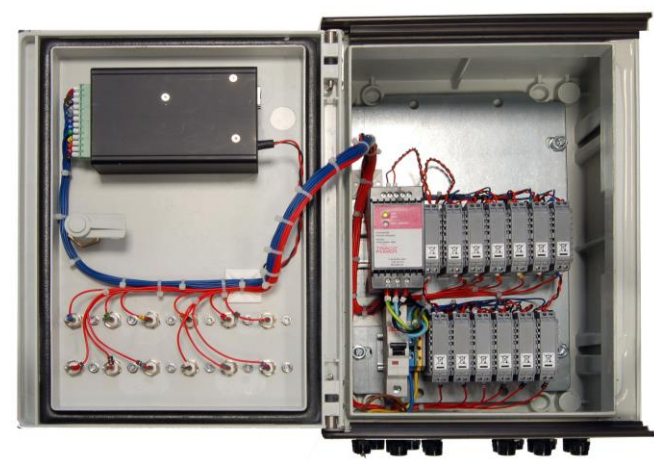


The MTN/5000 features a 3.5 inch TFT touchscreen with an easy-to-navigate menu that enables users to set data sampling periods, alarm threshold levels and delay times on a channel-by-channel basis or across all channels. The system will accept voltage or 4-20mA inputs and can be used to monitor many different types of sensor. AC outputs are available via door-mounted BNCs for easy analysis. Modbus and remote PC monitoring available as options.

## MTN/5000



## Applications

Vibration monitoring and logging  
 Any sensor-based design e.g. temperature, pressure, vibration, torque, voltage/current/power

## Technical

Analogue input channels	12
Sampling resolution	12 bit
Sampling speed	Up to 250KHz
Screen	3.5" (89mm) TFT Touchscreen 480 x 320 x 24 bit colour
Sample buffer	12 x 100 samples
Operating voltage	100-240VAC
Alarms	12 (user-configurable alarm level and alarm delay).
Enclosure	GRP
Dimensions (enclosure only):	350 x 250 x 200 mm
Dimensions (including brackets):	395 x 250 x 200 mm

## Options

- Modbus TCP/IP
- PC connectivity for remote monitoring and data logging
- Alarm beacon
- Internal-mounted display and BNCs for IP65 protection

## Screenshots

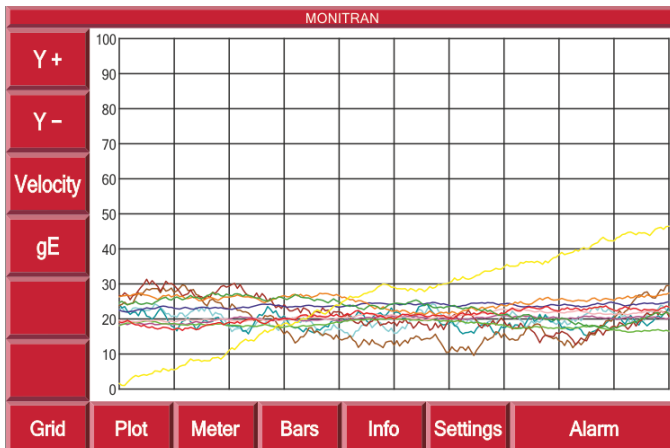
### Grid format

MONITRAN			
1: GS-34512 System Motor 1 DE Velocity	14.30 mm/s	7: GS-34512 System Motor 1 DE gE	23.10 gE
2: GS-34512 System Motor 1 NDE Velocity	21.90 mm/s	8: GS-34512 System Motor 1 NDE gE	8.50 gE
3: GS-34512 System Motor 2 DE Velocity	26.30 mm/s	9: GS-34512 System Motor 2 DE ge	21.80 gE
4: GS-34512 System Motor 2 NDE Velocity	27.00 mm/s	10: GS-34512 System Motor 2 NDE gE	21.80 gE
5: GS-34512 System Motor 3 DE Velocity	24.60 mm/s	11: GS-34512 System Motor 3 DE gE	22.90 gE
6: GS-34512 System Motor 3 NDE Velocity	23.60 mm/s	12: GS-34512 System Motor 3 NDE gE	21.30 gE
<div>Grid Plot Meter Bars Info Settings Alarm</div>			

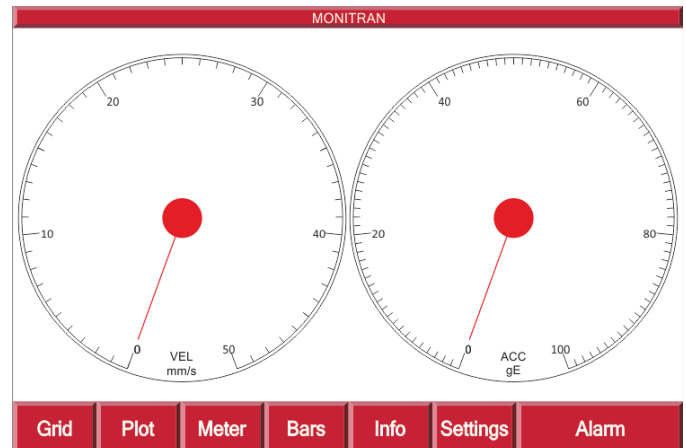
### Alarm setting

MONITRAN	
1: GS34512 System Motor 1 DE Velocity [0-20mm/s]	
Threshold	Current
20.00 mm/s	0.60 mm/s
Delay	Minimum
6.0 Sec	0.50 mm/s
Output	Maximum
0 mm/s	10.20 mm/s
Buffer	Mean
1 Samples	7.30 mm/s
<div>Prev Next</div>	
<div>Grid Plot Meter Bars Info Settings Alarm</div>	

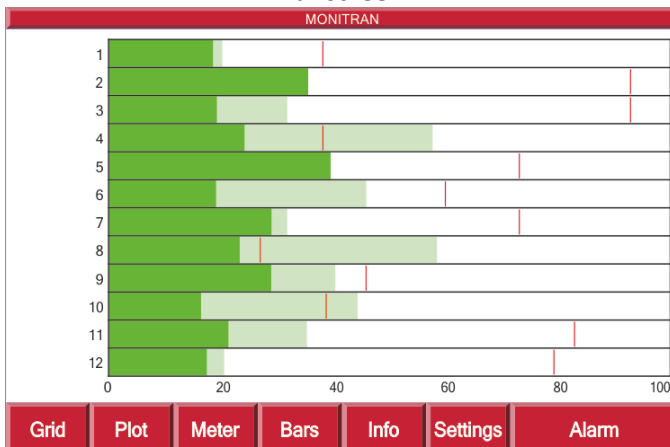
### Plot screen



### Meter screen



### Bar screen



### Information screen

MONITRAN	
Serial Number	MAC address
507190	00-11-22-33-44-55
Calibrated	IP address
12/08/15	192.168.57.100
Unit ID	Port
001	502
Software	Slave ID
1.1.17	2
System	Modbus Registers
MTN/5000-000	40001-40012
www.monitran.com	unsigned integer 16 bit (read)
info@monitran.com	register = screen value x 1000
<div>Grid Plot Meter Bars Info Settings Alarm</div>	

## System overview

